



A.O. SMITH
WATER PRODUCTS
COMPANY
PSD - Alsip, Illinois

WATER HEATER BULLETIN

Date: December 20, 1999
Subject: Gas Water Heater Conversion Policy
To: All Accounts

No. 137 Rev. 2

* This supersedes all previous letters and field bulletins concerning residential and commercial water heater conversion.

GAS WATER HEATER CONVERSION POLICY

All A.O. Smith Water Products Company's residential and commercial gas water heaters are designed certified by CSA or UL, under ANSI Standards for operation on one type of gas only, as indicated on the water heater's model number and rating plate.

A.O. Smith realizes that there may be certain situations where a field conversion may be necessary and in order to facilitate such a conversion, A. O. Smith complies with CSA or UL regulations ensuring that a field conversion be appropriately and safely completed.

An improper field conversion from one type of gas to another could cause potentially dangerous conditions that may cause an explosion or fire resulting in property damage, bodily injury or both.

A.O. SMITH WILL ONLY ALLOW THE CONVERSION OF GAS WATER HEATERS FROM LP GAS (PROPANE) TO NATURAL GAS. THE CONVERSION OF A GAS WATER HEATER FROM NATURAL GAS TO LP GAS (PROPANE) IS NOT ALLOWED UNDER ANY CIRCUMSTANCES.

A.O. Smith will provide kits as demand warrants through our Parts Department, phone no. 1-800-433-2545. Prices, dimensions and specifications are subject to change without notice.

Each conversion kit is to be installed by an A.O. Smith service agent or a gas utility serviceman in accordance with A.O. Smith's written instructions and all codes and requirements of the authority having jurisdiction. Failure to follow instructions could result in serious injury or property damage. The utility performing this work assumes responsibility for this conversion.

Changing the Input on Gas Water Heaters

The only changes to the input of a gas water heater allowed are:

- Adjustments to match that shown on the rating plate of the heater. The installation instructions supplied with the heater indicate if adjustments to input are a required procedure.
- Changes made as required to adjust the heater for proper operation at high altitude as determined by a qualified service technician. Service manuals include the proper procedure for adjusting heaters at high altitudes.

Conversion of Gas Water Heaters

The conversion of LP gas (Propane) to Natural gas is ONLY allowed providing:

- The conversion is done as part of a gas utility's program where propane appliances were installed anticipating the completion of natural gas service to the area. The conversion must be done under the direct supervision of the utility and by their service representatives.

Claims of damage or injury arising from the unauthorized conversion of any A.O. Smith water heater not design certified for conversion will be the complete and total responsibility of the person or entity making the conversion.

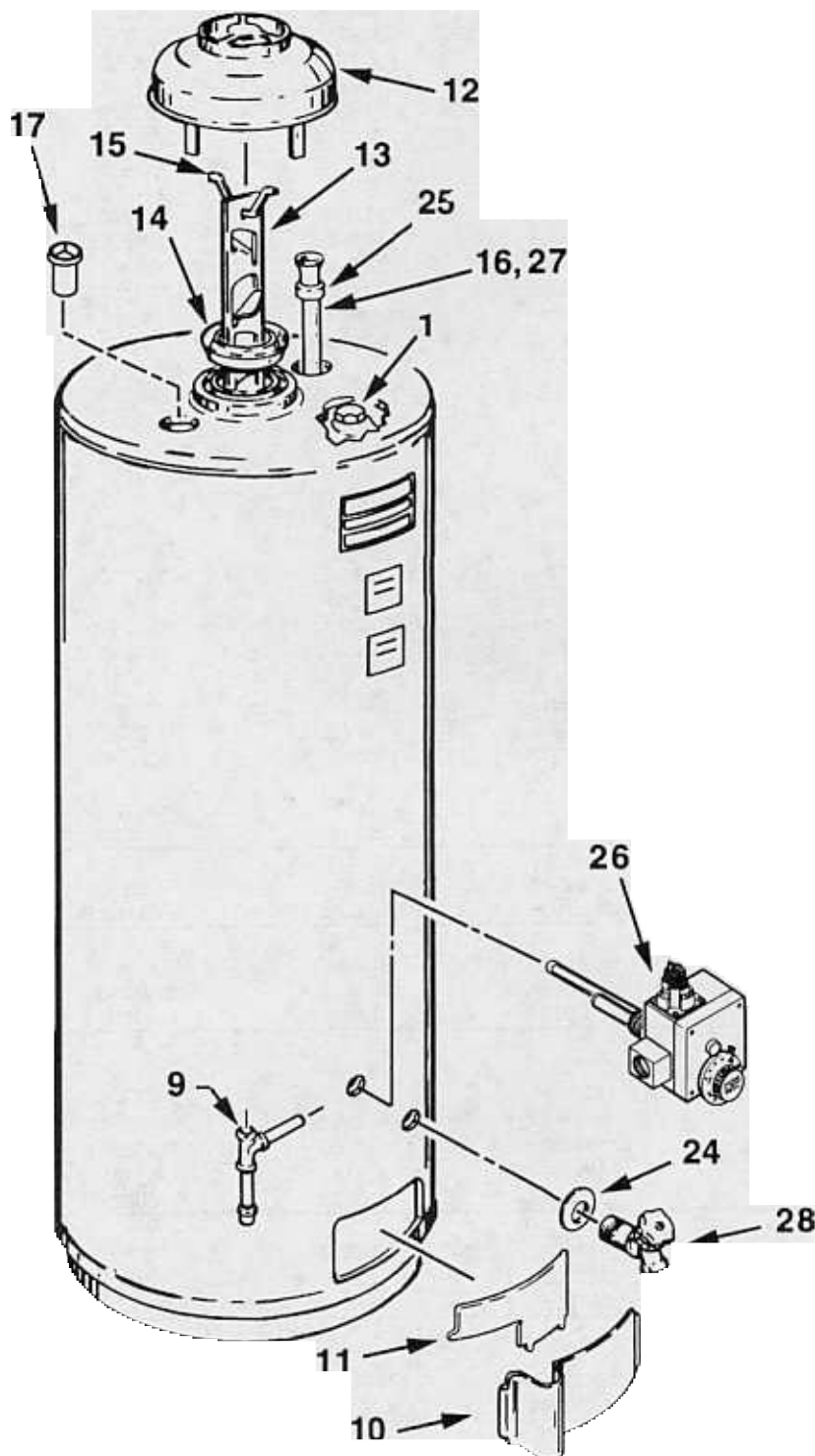
If you have any questions regarding the above policy, please contact the A.O. Smith Parts Department at 1-800-433-2545 or our Technical Information Center at 1-800-527-1953.

A.O. SMITH WATER PRODUCTS CO., INC.
5621 W. 115TH STREET • ALSIP, ILLINOIS 60803
PHONE: 1-800-433-2545
FAX: 1-800-433-2515 • www.hotwater.com

A.O. SMITH
WATER PRODUCTS
COMPANY

GAS

RESIDENTIAL WATER HEATER PARTS LIST
MODELS FSGH/PGXH-30, 40 & 50
SERIES: 240/241



RELIEF VALVE
FGR-30, 40 & 50 MODELS



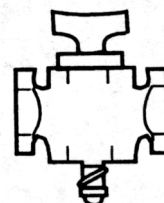
AUTOMATIC (SELF CLOSING) TYPE

PRESS.	*TYPE	SIZE	TEMP RELIEF
150 lbs.	T & P	3/4" X 3/4"	210°

PART NO.

43151-2 * Temperature & Pressure

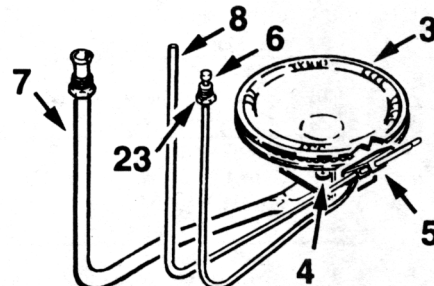
29



MAIN GAS SHUTOFF

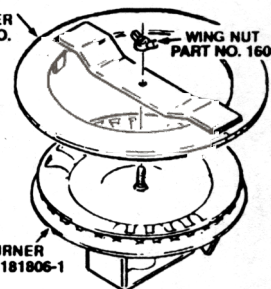
2

BURNER ASSEMBLY
FGR-30, 40 & 50 MODELS



SMR R99 MODELS ONLY

FLAME
SPREADER
PART NO.
181101



WING NUT
PART NO. 160629

MAIN BURNER
PART NO. 181806-1

Item	Description	FSGH/PGXH-30 240/241	FSGH/PGXH-40 240/241	FSGH/PGXH-50 240/241
1	ANODE			
	FSGH & "T" Models	43817-25	43817-29	43817-35
	PGXH & "T" Models	180618-44	180618-42	180618-44
2	BURNER ASSEMBLY, MAIN - Natural	182725	182725-15	182725-4
	BURNER ASSEMBLY, MAIN - Propane	182725-1	182725-16	182725-5
3	Burner Head - Natural	182730	182730	182730
	Burner Head - Propane	182730	182730	182730
4	Orifice, Main Burner - Natural	181508-31	181508-31	181508-31
	Orifice, Main Burner - Propane	181791-50	181791-50	181791-50
5	Burner Assembly, Pilot - Natural.....	<u>182729</u>	<u>182729</u>	<u>182729</u>
	Burner Assembly, Pilot - Propane.....	<u>182729-1</u>	<u>182729-1</u>	<u>182729-1</u>
6	Thermocouple	<u>23675</u>	<u>23675</u>	<u>23675</u>
7	Tube, Main Burner - Natural	182727	182727	182727
	Tube, Main Burner - Propane	182728	182728	182728
8	Tube, Pilot	23925-20	23925-20	23925-20
9	Dirt Leg Assembly - Propane	181206	181206	181206
	DOOR			
10	Outer	180522	180522	180522
11	Inner	180596	180596	180596
12	Draft Hood	181082	181082	181082
13	Flue Baffle	181589	181589	181589
14	Flue Restrictor	34894	34894	34894
15	Hanger, Baffle.....	181360	181360	181360
	HEAT TRAP ("T" Models)			
16	Inlet	181068-35	181068-35	181068-35
17	Outlet	181235	181235	181235
	LABEL			
18	* Flammable Vapor Warning	181139	181139	181139
19	* Lighting & Operating	182798	182798	182798
20	* Scald Warning	181138	181138	181138
21	* Temperature	182734	182734	182734
22	* Instruction Manual	182732	182732	182732
23	Nut, Compression	32365	32365	32365
24	Pipe Collar	20172-14	20172-14	20172-14
25	Spacer, Inlet Tube	42589-1	42589-1	42589-1
26	THERMOSTAT			
	Natural	<u>182791</u>	<u>182791</u>	<u>182791</u>
	Propane	<u>182792</u>	<u>182792</u>	<u>182792</u>
27	Tube, Inlet	160907-35	160907-35	160907-35
	VALVE			
28	Drain	26273-5	26273-5	42037-1
29	Main Gas Shutoff	181737	181737	181737
	SMR S44			
16	Heat Trap, Inlet Tube	181295-35	181295-35	181295-35
28	Tube, Inlet	160501-35	160501-35	160501-35
	SMR H43			
16	Heat Trap, Inlet	181295-35	181295-35	181295-35
28	Tube, Inlet	160501-35	160501-35	160501-35
	Valve, Relief	180078	180078	180078
	SMR R99			
2	BURNER ASSEMBLY, MAIN - Natural	182726-0	182726-1	182786-3
3	Burner Head Assembly	182730-1	182730-1	182730-1
4	Orifice, Main Burner - Natural	181508-31	181508-31	181508-31
	Manual, Earthquake Instruction	181809	181809	181809
	Nox Flame Spreader Assembly - Natural	181101	181101	181101
	Wing Nut, Flame Spreader	160629	160629	160629
	SMR S06			
	Insert Sheet.....	182552	182552	182552
	Manual, Earthquake Instruction	181809	181809	181809
32	Drain Valve - 50 gallon only.....	26273-5	26273-5	26273-5
	SMR S19			
1	ANODE			
	FSGH & "T" Models	43817-25	43817-29	43817-35
	PGXH & "T" Models	180618-44	180618-42	180618-44
	SMR K32			
2	BURNER ASSEMBLY, MAIN - Natural	182725-2	182725-17	182725-6
4	Orifice, Main Burner - Natural	181508-32	181508-32	181508-32
	SMR S45			
1	Anode, Outlet	181125-42	181125-42	181125-42
	Nipple	38469-4	38469-4	38469-4
	Pipe Plug	92650	92650	92650

Note: Underlined parts are recommended stock items for emergency replacement. Consider gas used in your area only.

* Not illustrated.

"T" denotes heat trap models.