



A.O. SMITH
WATER PRODUCTS
COMPANY
PSD - Alsip, Illinois

WATER HEATER BULLETIN

Date: December 20, 1999
Subject: Gas Water Heater Conversion Policy
To: All Accounts

No. 137 Rev. 2

* This supersedes all previous letters and field bulletins concerning residential and commercial water heater conversion.

GAS WATER HEATER CONVERSION POLICY

All A.O. Smith Water Products Company's residential and commercial gas water heaters are designed certified by CSA or UL, under ANSI Standards for operation on one type of gas only, as indicated on the water heater's model number and rating plate.

A.O. Smith realizes that there may be certain situations where a field conversion may be necessary and in order to facilitate such a conversion, A. O. Smith complies with CSA or UL regulations ensuring that a field conversion be appropriately and safely completed.

An improper field conversion from one type of gas to another could cause potentially dangerous conditions that may cause an explosion or fire resulting in property damage, bodily injury or both.

A.O. SMITH WILL ONLY ALLOW THE CONVERSION OF GAS WATER HEATERS FROM LP GAS (PROPANE) TO NATURAL GAS. THE CONVERSION OF A GAS WATER HEATER FROM NATURAL GAS TO LP GAS (PROPANE) IS NOT ALLOWED UNDER ANY CIRCUMSTANCES.

A.O. Smith will provide kits as demand warrants through our Parts Department, phone no. 1-800-433-2545. Prices, dimensions and specifications are subject to change without notice.

Each conversion kit is to be installed by an A.O. Smith service agent or a gas utility serviceman in accordance with A.O. Smith's written instructions and all codes and requirements of the authority having jurisdiction. Failure to follow instructions could result in serious injury or property damage. The utility performing this work assumes responsibility for this conversion.

Changing the Input on Gas Water Heaters

The only changes to the input of a gas water heater allowed are:

- Adjustments to match that shown on the rating plate of the heater. The installation instructions supplied with the heater indicate if adjustments to input are a required procedure.
- Changes made as required to adjust the heater for proper operation at high altitude as determined by a qualified service technician. Service manuals include the proper procedure for adjusting heaters at high altitudes.

Conversion of Gas Water Heaters

The conversion of LP gas (Propane) to Natural gas is ONLY allowed providing:

- The conversion is done as part of a gas utility's program where propane appliances were installed anticipating the completion of natural gas service to the area. The conversion must be done under the direct supervision of the utility and by their service representatives.

Claims of damage or injury arising from the unauthorized conversion of any A.O. Smith water heater not design certified for conversion will be the complete and total responsibility of the person or entity making the conversion.

If you have any questions regarding the above policy, please contact the A.O. Smith Parts Department at 1-800-433-2545 or our Technical Information Center at 1-800-527-1953.

A.O. SMITH WATER PRODUCTS CO., INC.
5621 W. 115TH STREET • ALSIP, ILLINOIS 60803
PHONE: 1-800-433-2545
FAX: 1-800-433-2515 • www.hotwater.com

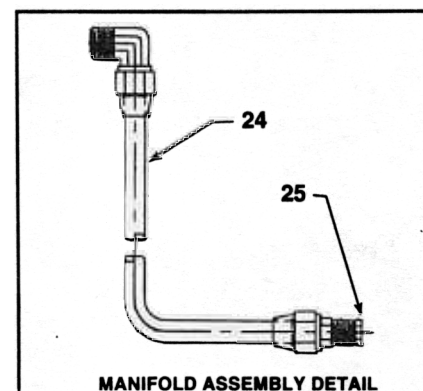
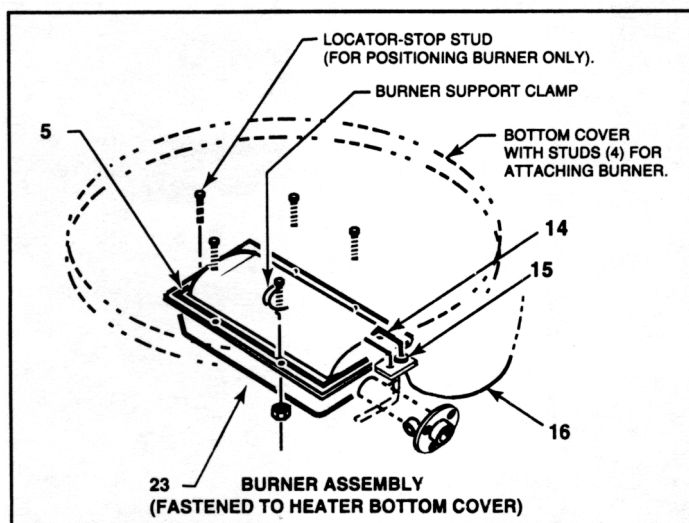
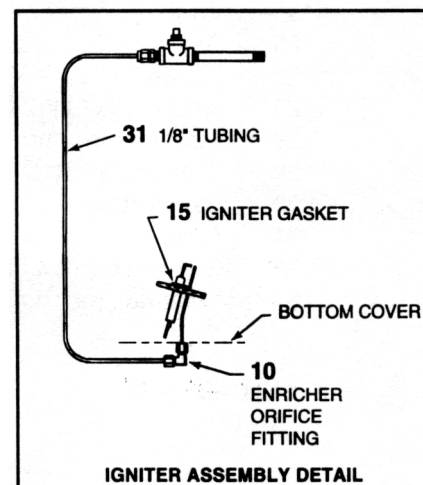
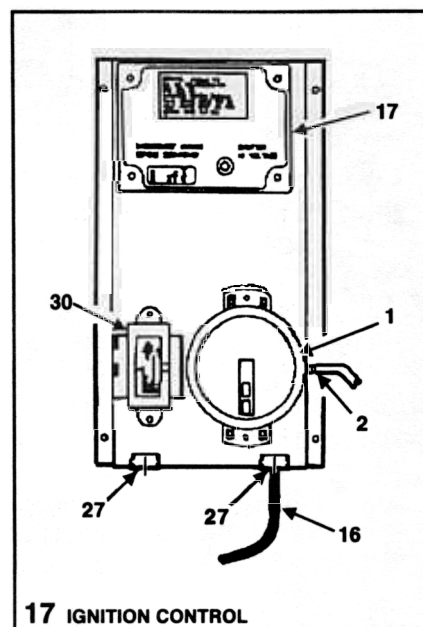
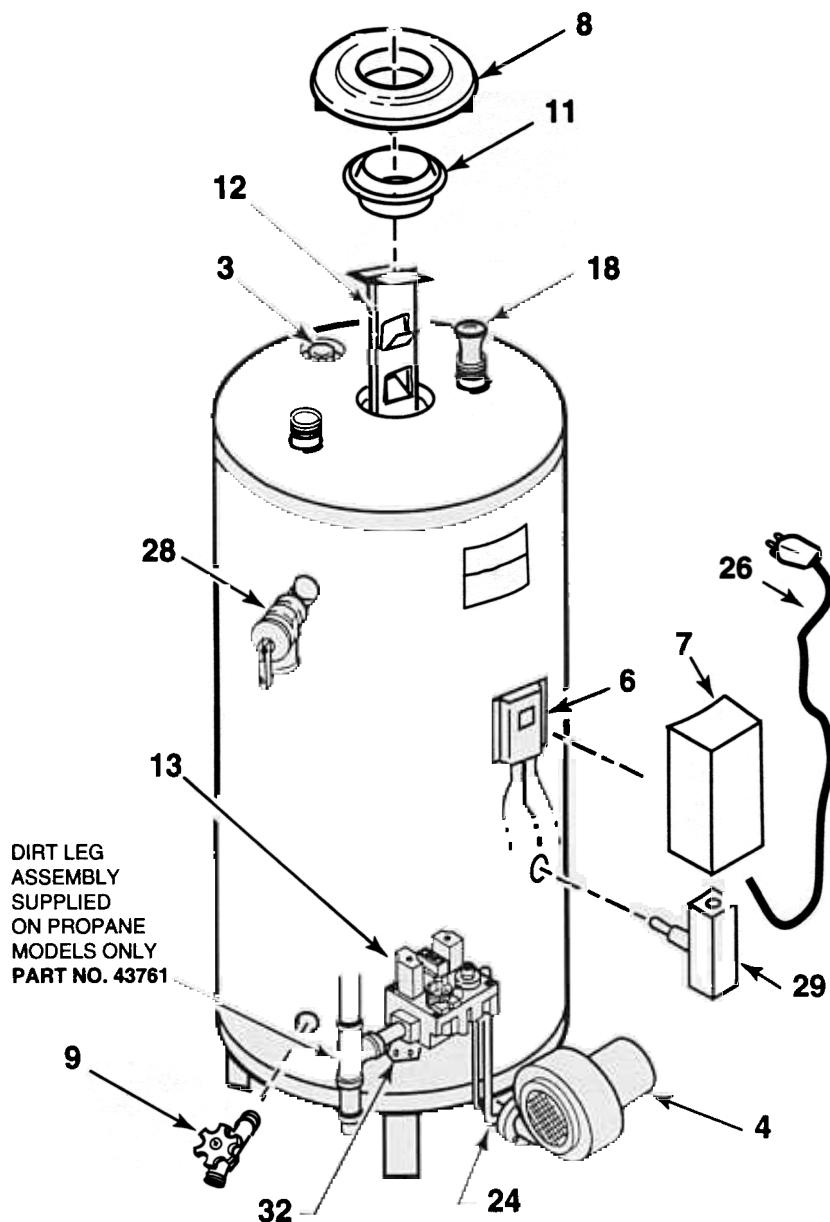
A.O. SMITH
WATER PRODUCTS
COMPANY

GAS

RESIDENTIAL WATER HEATER PARTS LIST

MODELS FGT-75 & 100

SERIES: 230/231& 234



Item	Description	FGT-75 230/231	FGT-1 00 230/231	FGT-75 234
1	Air Proving Switch	182055	182055	182055
2	Air Switch Tubing	182056-24	182056-24	182056-24
3	Anode	180618-50	180618-50	180618-38
4	Blower	182048	182048-1	182048
5	Burner Gasket	182005-1	182005-1	182005
6	Control Box	182019	182019	182019
7	Control Box Cover	182020	182020	182020
8	Draft Hood	39072	39072	39072
9	Drain Valve	26273-7	26273-7	26373-7
10	Enricher Orifice Fitting	182008-1	182008-1	182008-1
11	Flue Restrictor	35405	35405	35405
12	Flue Baffle	181995	182118	181995
13	Gas Valve	182052-1	182052-1	182052-1
14	Igniter	182005-1	182005-1	182176
15	Igniter Gasket	182176	182176	182176
16	Igniter Wire	182178	182178	182178
17	Ignition Control	182054	182054	182054
18	Inlet Tube	40542-26	40542-30	40542-26
19	* Label, 800 Help Line	190600	190600 .	190600
20	* Label, Flammable Vapors	182105	182105	182105
21	* Label, Instruction	182564-12	182564-12	182564-12
22	* Label, Lighting & Operating	182560	182560	182560
23	Main Burner	182121	182121	182121
24	Manifold, Natural	182013	182013-2	182013
	Manifold, Propane	182013-1	182013-3	182013-1
25	Orifice	29366-9	29366-234	29366-9
26	PowerCord	182022	182022	182022
27	Strain Relief Nut	182056-24	182056-24	182056-24
28	Temperature and Pressure Relief Valve	43151	43151	43151
29	Thermostat-ECO	192829-1	192829-1	192829-1
30	Transformer	182050	182050	182050
31	Tubing, 1/8	182113	182113	182113
32	Gas Valve Bracket	182109	182109	182109
33	* Manual, Instruction	182557	182557	182557

* Not illustrated.