



**A.O. SMITH**  
**WATER PRODUCTS**  
**COMPANY**  
PSD - Alsip, Illinois

# **WATER HEATER BULLETIN**

Date: December 20, 1999  
Subject: Gas Water Heater Conversion Policy  
To: All Accounts

No. 137 Rev. 2

\* This supersedes all previous letters and field bulletins concerning residential and commercial water heater conversion.

## **GAS WATER HEATER CONVERSION POLICY**

All A.O. Smith Water Products Company's residential and commercial gas water heaters are designed certified by CSA or UL, under ANSI Standards for operation on one type of gas only, as indicated on the water heater's model number and rating plate.

A.O. Smith realizes that there may be certain situations where a field conversion may be necessary and in order to facilitate such a conversion, A. O. Smith complies with CSA or UL regulations ensuring that a field conversion be appropriately and safely completed.

An improper field conversion from one type of gas to another could cause potentially dangerous conditions that may cause an explosion or fire resulting in property damage, bodily injury or both.

**A.O. SMITH WILL ONLY ALLOW THE CONVERSION OF GAS WATER HEATERS FROM LP GAS (PROPANE) TO NATURAL GAS. THE CONVERSION OF A GAS WATER HEATER FROM NATURAL GAS TO LP GAS (PROPANE) IS NOT ALLOWED UNDER ANY CIRCUMSTANCES.**

A.O. Smith will provide kits as demand warrants through our Parts Department, phone no. 1-800-433-2545. Prices, dimensions and specifications are subject to change without notice.

Each conversion kit is to be installed by an A.O. Smith service agent or a gas utility serviceman in accordance with A.O. Smith's written instructions and all codes and requirements of the authority having jurisdiction. Failure to follow instructions could result in serious injury or property damage. The utility performing this work assumes responsibility for this conversion.

### **Changing the Input on Gas Water Heaters**

The only changes to the input of a gas water heater allowed are:

- Adjustments to match that shown on the rating plate of the heater. The installation instructions supplied with the heater indicate if adjustments to input are a required procedure.
- Changes made as required to adjust the heater for proper operation at high altitude as determined by a qualified service technician. Service manuals include the proper procedure for adjusting heaters at high altitudes.

### **Conversion of Gas Water Heaters**

The conversion of LP gas (Propane) to Natural gas is ONLY allowed providing:

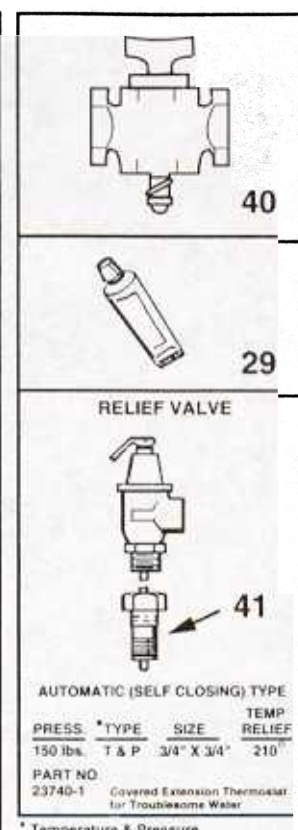
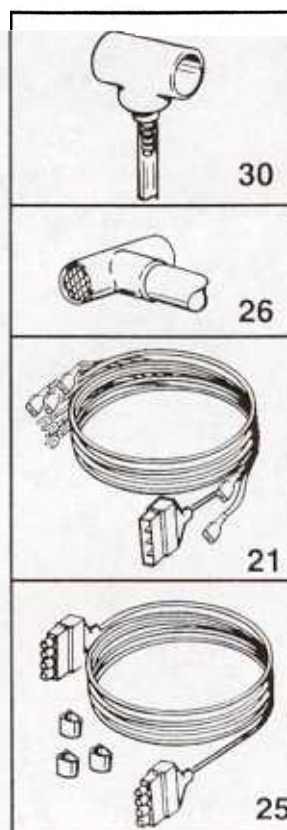
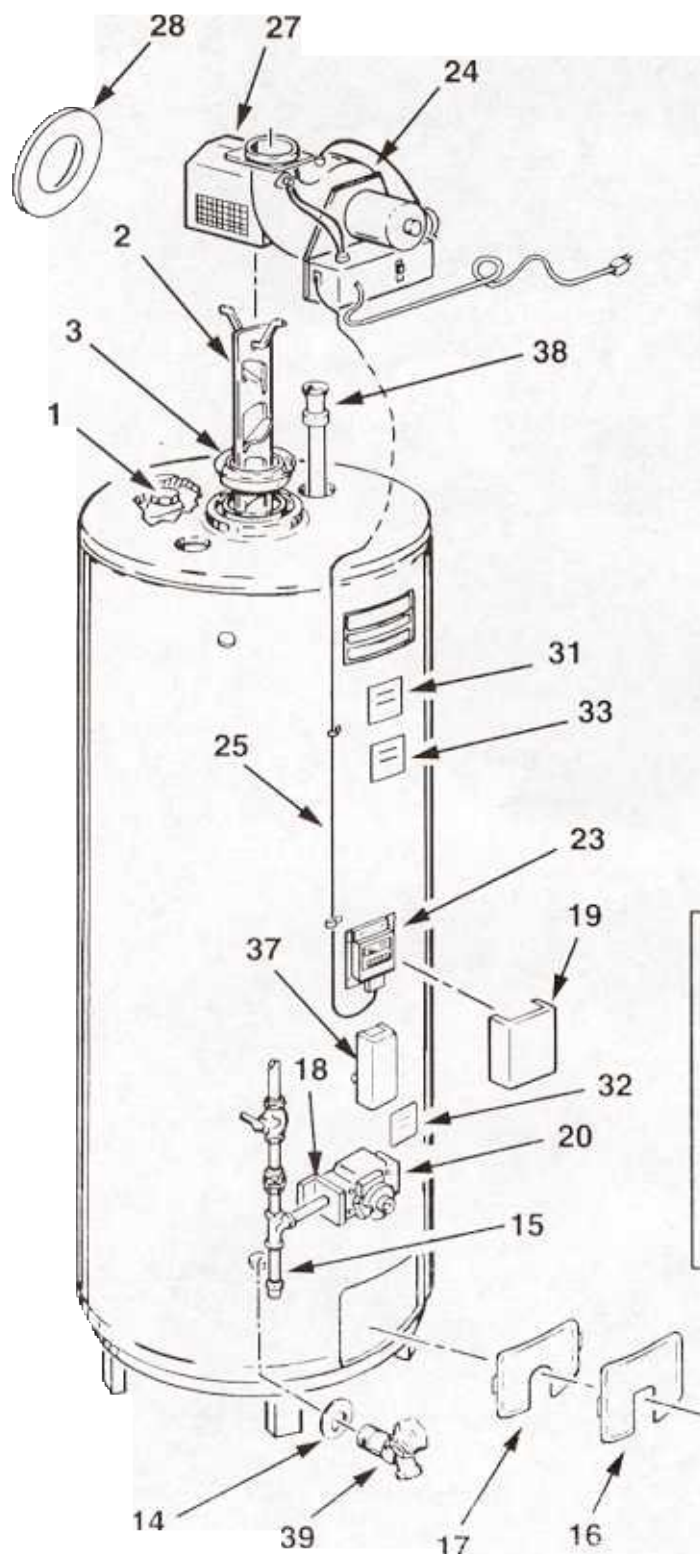
- The conversion is done as part of a gas utility's program where propane appliances were installed anticipating the completion of natural gas service to the area. The conversion must be done under the direct supervision of the utility and by their service representatives.

Claims of damage or injury arising from the unauthorized conversion of any A.O. Smith water heater not design certified for conversion will be the complete and total responsibility of the person or entity making the conversion.

If you have any questions regarding the above policy, please contact the A.O. Smith Parts Department at 1-800-433-2545 or our Technical Information Center at 1-800-527-1953.

---

**A.O. SMITH WATER PRODUCTS CO., INC.**  
5621 W. 115TH STREET • ALSIP, ILLINOIS 60803  
PHONE: 1-800-433-2545  
FAX: 1-800-433-2515 • [www.hotwater.com](http://www.hotwater.com)

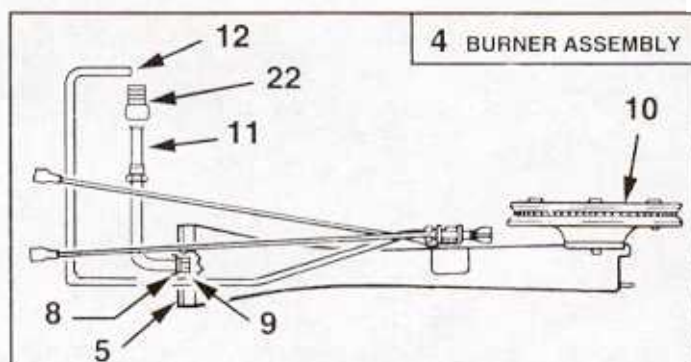
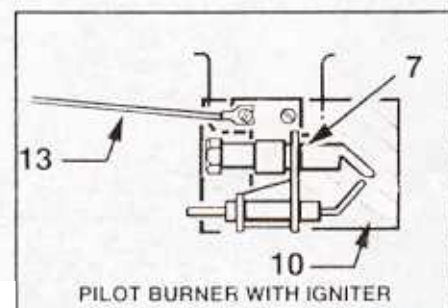
**RESIDENTIAL WATER HEATER PARTS LIST**
**MODELS FPS-75, FPSE-75**  
**SERIES: 230/231, 232/233, 234/235**


**RELIEF VALVE**

PRESS.	*TYPE	SIZE	TEMP RELIEF
150 lbs.	T & P	3/4" X 3/4"	210°

PART NO.  
23740-1 Covered Extension Thermostat for Troublesome Water

\* Temperature & Pressure


**4 BURNER ASSEMBLY**


**PILOT BURNER WITH IGNITER**

A.O. SMITH WATER PRODUCTS CO., INC.

5621 W. 115TH STREET • ALSIP, ILLINOIS 60803

PHONE: 1-800-433-2545 • FAX: 1-800-433-2515 • WWW.HOTWATER.COM

		FPS/FPSE-75 230/231/232 233/234/235
Item	Description	
1	Anode .....	180618-42
	<b>BAFFLE</b> .....	
2	Baffle, Flue .....	182193
3	Restrictor, Flue .....	35405
4	BURNER ASSEMBLY, MAIN - Natural (Series 230, 232).....	181954-2
	BURNER ASSEMBLY, MAIN - Natural (Series 234).....	182217
	BURNER ASSEMBLY, MAIN - Propane (Series 231, 233).....	181954-3
	BURNER ASSEMBLY, MAIN - Propane (Series 235) .....	182217-3
5	Air Shutter .....	35376
6	Burner, Main .....	41157-4
7	Burner Assembly, Pilot - Natural .....	<u>182220</u>
	Burner Assembly, Pilot - Propane .....	<u>182220-1</u>
8	Locknut .....	29001
9	Orifice, Main - Natural .....	29366-21
	Orifice, Main - Propane .....	181778-39
10	Plate, Pilot Mounting .....	192625
11	Tube, Main Burner - Natural .....	39114-4
	Tube, Main Burner - Propane .....	181784-2
12	Tube, Pilot .....	23330
13	Wire, Ground .....	77948-9
14	Collar, Pipe .....	20172-6
15	Dirt Leg Assembly - Propane .....	43761
	<b>DOOR</b> .....	
16	Outer .....	39112-1
17	Inner .....	39923
	<b>IGNITION CONTROL</b> .....	
18	Bracket, Gas Valve - Natural .....	182179
	Bracket, Gas Valve - Propane .....	182505
19	Cover, Control Panel .....	182181
20	Gas Valve Assembly - Natural .....	<u>182238</u>
	Gas Valve Assembly - Propane .....	<u>182239</u>
21	Harness, Ignition Wiring (Series 234/235) .....	192841
	Harness, Ignition Wiring (Series 230 thru 233) .....	182203
22	Inverted Adapter - Natural .....	181945
23	Module, Ignition (Series 230 thru 233).....	<u>181723</u>
	Module, Ignition (Series 234/235).....	<u>182352</u>
	<b>INSTALLATION KIT</b> .....	
24	Blower Assembly .....	<u>182225</u>
25	Blower Wiring Harness .....	181728-1
26	Tee, Discharge Terminal .....	181617
27	Fan Housing .....	182156
28	Plate, Wall .....	181557
29	Sealant, Tube High Temperature Silicone .....	<u>181564</u>
30	Tee Assembly, Condensate .....	181865
	<b>LABEL</b> .....	
31	Flammable Warning .....	181139-1
32	Lighting & Operating .....	182562
33	Scald Warning .....	181138
34	*Temperature .....	182734
35	*Manual, Instruction .....	182586
36	*Insert Sheet .....	192842
37	Thermostat .....	<u>192829-1</u>
38	Tube, Inlet .....	41072-20
39	Valve, Drain .....	26273-7
40	Valve, Main Gas Shutoff .....	<u>181737</u>
41	Extender, T & P Valve .....	43231-1
	<b>SMR S44</b> .....	
1	Anode .....	29109-42
41	Extender, T & P Valve .....	86979-5
	Sleeve, 0.84" Dia. Anode .....	182380
37	Tube, Inlet .....	41931-20
	<b>SMR H43</b> .....	
41	Extender, T & P Valve .....	86979-5
37	Tube, Inlet .....	41312-20
	Valve, Relief .....	43151-2
	<b>SMR K32</b> .....	
1	Anode .....	29109-42
4	BURNER ASSEMBLY, MAIN - Natural .....	182217-2
8	Orifice, Main - Natural .....	29366-24
	High Altitude Assembly .....	182573
	<b>SMR S06</b> .....	
	Insert Sheet .....	182552
	<b>SMR S19</b> .....	
1	Anode .....	29109-42
	<b>SMR P83</b> .....	
	Valve, Relief .....	43151-2

NOTE: Underlined parts are recommended stock items for emergency replacement.  
Consider gas used in your area only.

\* Not illustrated.