

ProMax®

EXCEPTIONAL VALUE

ProMax is an economical water heater designed for households that need an exceptional performer and provides long-lasting value.

DYNACLEAN™ DIFFUSER DIP TUBE

Helps reduce lime and sediment buildup, maximizes hot water output. Made from long-lasting PEX cross-linked polymer.

COREGARD™ ANODE ROD

A. O. Smith's exclusive aluminum anode has a stainless steel core, protects tank against corrosion longer versus ordinary anodes.

GREEN CHOICE® GAS BURNER

Patented "Eco-Friendly" design reduces NOx emissions by up to 33% and complies with less than 40 ng/j requirements for low NOx.

PUSH-BUTTON PIEZO IGNITOR

Makes lighting pilot fast and easy with one-hand push-button spark ignition.

DURABLE TAMPER-RESISTANT BRASS DRAIN VALVE

BLUE DIAMOND® GLASS COATING

Provides superior corrosion resistance compared to industry-standard glass lining.

CSA CERTIFIED AND ASME RATED T&P RELIEF VALVE

Top-mounted T&P relief valve available as option.

CODE COMPLIANCE: UBC, CEC, SBCC, CABO, HUD, BOCA NATIONAL CODES, ASHRAE/IESNA 90.1-CURRENT EDITION AND 2004 NAECA STANDARDS

DESIGN-CERTIFIED BY CSA INTERNATIONAL

According to ANSI Z21.10.1 - CSA 4.1 standards governing storage-type water heaters.

FLAMMABLE VAPOR IGNITION RESISTANT COMPLIANT

See other side.

6-YEAR LIMITED TANK AND PARTS WARRANTY

For complete information, consult written warranty.



SERIES 200/201



Green Choice®
The Eco-Friendly Gas-Fired Burner

ProMax® SERIES 200/201

MODEL NUMBER	FIRST HOUR RATING GALLONS	ENERGY FACTOR	GALLON CAPACITY	BTU INPUT PER HOUR NATURAL†	RECOVERY 90°F RISE GALLONS PER HOUR	FOAM THICKNESS (INCHES)	DIMENSIONS IN INCHES						DRAFT HOOD OUTLET	APPROXIMATE SHIPPING WEIGHT (LBS)
							A	B	C	D	E	F		
TALL MODELS														
GCV-30	67	.61	30	35,500	36	1	61-1/2	58	16	13	8	52	3 or 4	112
GCV-40	70	.59	40	40,000	41	1	61-3/4	58-1/4	18	13	8	51-3/4	3 or 4	138
GCV-50	88	.58	50	40,000	41	1	60-3/4	57	20	13	8	50-1/4	3 or 4	153
SHORT MODELS														
GCVL-30	60	.61	30	35,500	36	1	50	46-3/8	18	13-1/2	8	40	3 or 4	112
GCVL-40	66	.59	40	40,000	41	1	51-1/2	47-3/4	20	13	8	41	3 or 4	135

Recovery capacity based on actual performance tests.

Water Connections – 3/4" on all models.

† Propane Gas – 37,000 BTU input for 50 gallon models & 36,000 BTU for 40 gallon models and 32,000 BTU input for 30 gallon models.

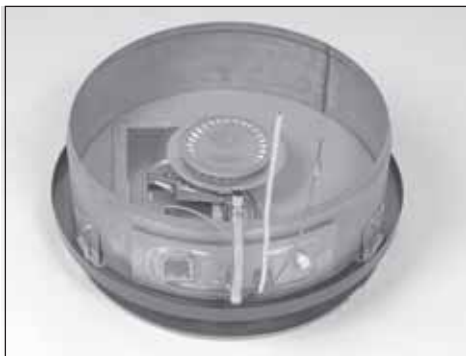
For 10-Year Tank and 6-Year Parts Warranty, change "G" to "X" in Model Number (example: XCV-40).

Heat Trap Nipples installed on all models.

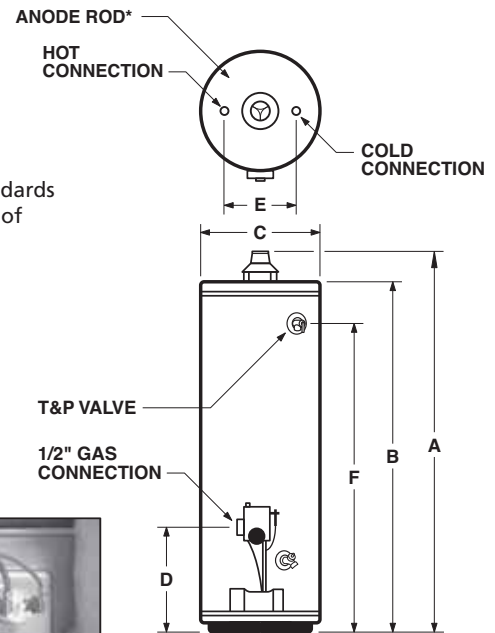
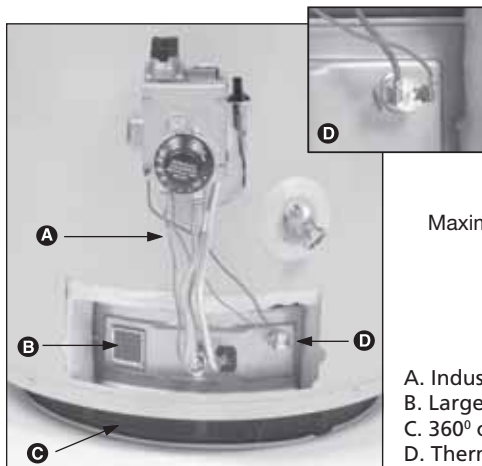
Flammable Vapor Ignition Resistant Water Heaters

A. O. Smith FVIR design meets or exceeds the American National Standards Institute standards (ANSI Z21.10.1 - 4.1 CSA Standards) that deal with the accidental or unintended ignition of flammable vapors, such as those emitted by gasoline.

Feature a sealed combustion chamber with air intake filter and a flame arrestor built into the water heater base. In addition, a thermal cutoff (TCO) device, is designed to shut off gas flow to the burner and pilot if poor combustion is detected.



If flammable vapors accidentally enter the combustion chamber, the arrestor is designed so flames burn off the top surface and can not escape down through the arrestor.



*Location for optional top-mounted T&P Valve if ordered from factory.

Maximum Hydrostatic Working Pressure: 150 PSI.

- A. Industry standard thermocouple
- B. Large View Port for easy burner inspection
- C. 360° combustion air filter
- D. Thermal Cutoff (TCO) with manual reset